

IBIDEN Co.,Ltd.
<https://www.ibiden.com/>



2-1, Kanda-cho, Ogaki, Gifu
503-8604, Japan
Tel: 0584-81-3111

■ Issued : Corporate Planning Group, Corporate Planning Division



This report uses Forest Stewardship Council®(FSC)-certified paper. This certification means that the paper is made using wood from forests managed appropriately. This report uses highly biodegradable and de-inkable vegetable ink. Waterless printing with no release of toxic effluents has been used. In addition, the graphics including graphs and charts can be easily identified by people with all types of color vision.

CORPORATE
PROFILE





Our aim is to be a company that grows stably by developing human resources, creating a place where more diverse people can play lively and active roles.

IBIDEN Group started business in 1912 as Ibigawa Electric Power Co., Ltd. with the mission of being the engine that would drive the local economy. In its over-100-year history the environment around our group has drastically changed. However, our company has a history of taking up challenges in product development that meets the needs of the time by working together toward the same goals under any circumstances, and by tirelessly mastering our original technologies.

In fiscal 2018, we launched our five-year mid-term management plan, “To the Next Stage 110 Plan” in order to realize sustainable growth toward the next 100 years by overcoming environmental changes. Under our basic policy, “What supports corporate activities is human resources,” we will actively invest our management resources in the growing market on the basis of human resources, realize our stable growth by strengthening the competitiveness of our existing businesses and by expanding new businesses, and drive our ESG-central operation in order to become a company trusted by all stakeholders.

We look forward to your continued support for the IBIDEN Group for many years to come.

President & CEO 

Mid-Term Management Plan

To The Next Stage 110 Plan

FY2018 to FY2022

To realize our sustainable growth toward in the next 100 years, IBIDEN Group launched our five-year mid-term management plan from fiscal 2018 to fiscal 2022, “To the Next Stage 110 Plan”. We will promote our ESG business management in order to become a company trusted by all stakeholders.

Pillar of the strategy

- Strengthening competitiveness of existing businesses
- Expanding new businesses
- Development of human resources
- Driving ESG-central operation

contents

Top Message	1	Business & Product Electronics	9
Mid-Term Management Plan	2	Business & Product Ceramics	11
Management Philosophy	3	Business & Product Other	13
Changes in Technology and Business	5	Global Network	15
Value Creation Story	7	Corporate Information	17

The IBIDEN WAY
—our corporate philosophy passed down
through generations and across borders
We strive to achieve sustainable growth
by implementing ESG management.

IBIDEN Brand Logo Mark



This cycle reflects the attitudes of people brought together from around the world to become recognized professionals in their fields as they work continuously to meet new challenges.

IBIDEN Group Charter of Behavior

We have established the IBIDEN Group Charter of Behavior by reflecting our roles as a global corporation as well as requests from our stakeholders in order to share the goals for the entire Group.

- Article 1: Compliance with laws, regulations, and ethics
- Article 2: Development together with stakeholders
- Article 3: Providing customer delight
- Article 4: Management based on global standards
- Article 5: Harmony with nature
- Article 6: Attractive and vibrant company



Trust through Integrity

Gaining customer and societal trust through "Genchi Genbutsu"

*Genchi Genbutsu: Go and See for yourself to thoroughly understand the situation

"Wa" Teamwork and Synergy

Integrating knowledge and wisdom from the employee involvement for greater power.

Challenge with Passion

Anticipating change, and acting boldly to create new value.

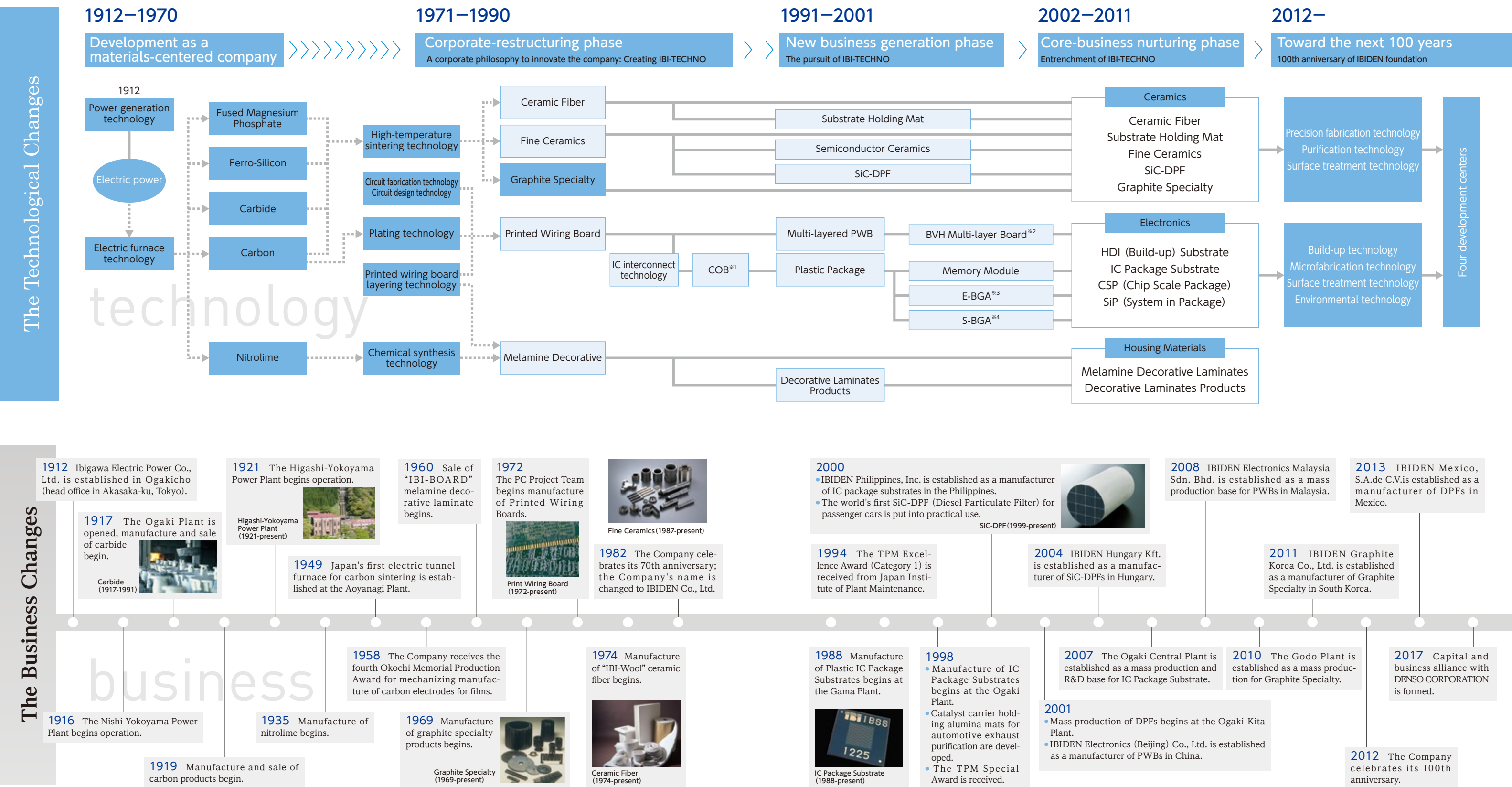
IBI-TECHNO Innovation

Evolving by overcoming hurdles through creativity and ingenuity.

"IBI-TECHNO"

The common spirit of all company people, expressing our determination to create new technologies through fusions and composites of our proprietary technologies.

We have expanded our business through creating new products by evolving and combining our own existing technologies.



We will realize sustainable value creation through innovating “IBI-TECHNO”, with respect for both “individuals” and “environment”.

Our company, which was founded as a hydroelectric power generation company intended to promote the regional economy, has long valued people and the global environment, and as a technology development company has contributed to society’s development with its state-of-the art technologies. From now, we will also continue to take up challenges in new value creation by continuously innovating “IBI-TECHNO,” which is to develop new technologies by evolving and uniting our original technologies.

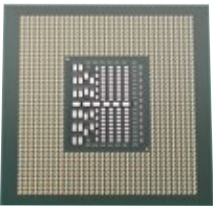
IBIDEN and the SDGs

In September 2015, the “Transforming our world: 2030 Agenda for Sustainable Development” was adopted by the United Nations General Assembly. In this agenda, the “SDGs: Sustainable Development Goals,” which comprise 17 goals and 169 targets, were formulated. Upholding the realization of harmony with the natural environment and an affluent society as its corporate philosophy, IBIDEN has continued to develop by creating products that lead to solving social issues with its innovative technologies. We believe that to positively contribute to achieving the SDGs through its businesses is a mission that IBIDEN should fulfill for society based on the IBIDEN WAY.



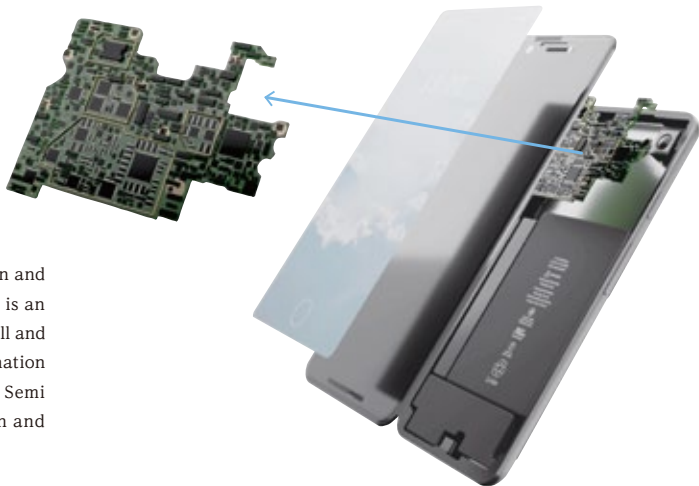


With our leading - edge technologies,
we lead the world in the electronics field.



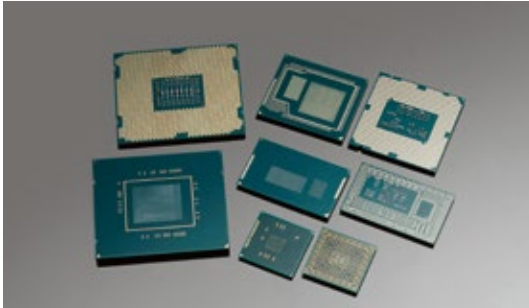
IC Package Substrate

Focusing on MPUs (micro processor unit) for personal computers and the Data Center, and GPUs (graphic processor unit) for AI and vehicle-mounted applications, we provide state-of-the-art IC packaging substrates. IC packaging substrate is an important component that functions together with IC chips. IBIDEN has always enhanced added values along with IC chip evolution.

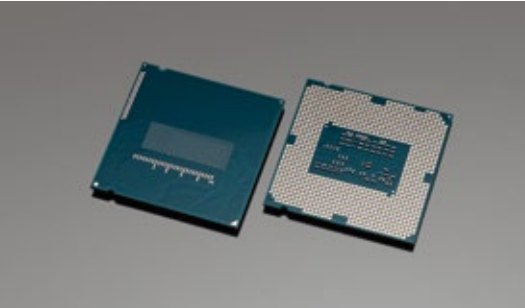


Printed Wiring Board

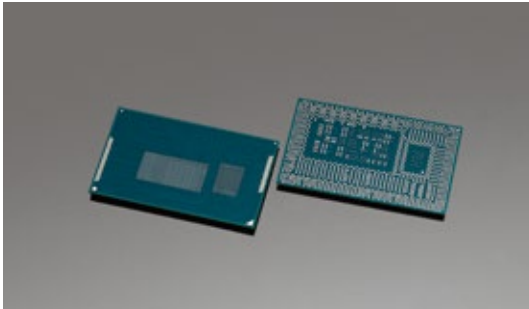
Focusing on high-end smartphones, we provide high-function and high-density printed circuit boards. A printed circuit board is an important component that supports the manufacturing of small and high-function products in line with the full-fledged dissemination of 5G. IBIDEN meets its customers' needs using Modified Semi Additive Process (MSAP) which enables free circuit design and high-density wiring.



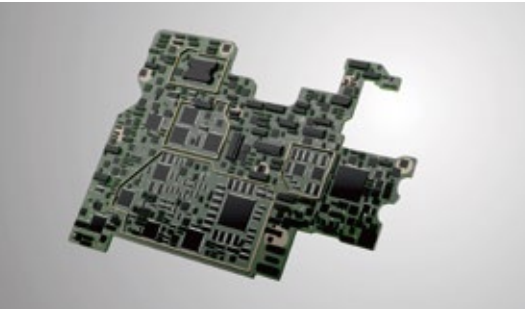
IC Package Substrate



IC Package Substrate for desktop PC



IC Package Substrate for mobile PC



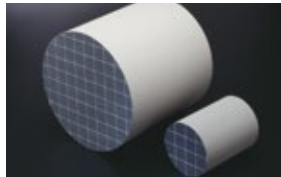
Printed Wiring Board for Smartphones



We explore new possibilities for ceramic products by evolving our core technologies nurtured over many years.

Automotive Exhaust System Components (DPF•AFP)

Diesel Particulate Filter (DPF), have grown as a standard component of the industry due to their performance and reliability. In the category of Substrate Holding Mat (MAT), we also provide products that meet market trends, achieving a high reputation and share in the market. We will continue to develop high-performance products and to reduce damage to the environment for the next generation.



SiC-DPF (Diesel Particulate Filter)



Substrate Holding Mat (MAT)



Catalyst for Industrial Plants (SCR)

NOx reduction catalysts are used by customers around the world as a key component of systems to effectively and efficiently reduce the NOx content of exhaust gas, helping to improve the global environment.



For Automobile



For Stationary



Graphite Specialty (FGM)

Made with the excellent properties of high strength, high purity and highly durability, our graphite products are contributing to the growth of leading-edge industries of every type including high-grade materials for semiconductor manufacturing equipment, electrode materials for electric-discharge machining use, materials for solar cell manufacturing equipment, and more.



Graphite Heater



Graphite Crucible



Silicon mono crystalline ingot puller

High Temperature Insulation Wool

Offering excellent heat resistance and insulating performance, this is available as both material and formed products, and is widely used in industrial products such as sintered bodies and fuel cells.



IBI WOOL-E



Heat resistant components



Electrodes for electric discharge machining EDX-7



IBI WOOL-E 2PM

Technologies and products developed through“IBI-TEC HNO” are applied extensively in a variety of fields.



Construction Business

IBIDEN Greentec Co., Ltd.
3-55, Gama-cho, Ogaki, Gifu 503-0021, Japan
Tel:0584-81-6111
Slope and garden construction, greenery planting, etc.

IBIDEN Engineering Co., Ltd.
1122, Kido-cho, Ogaki, Gifu 503-0973, Japan
Tel:0584-75-2301
Environmental measurement and analysis, design and installation of mechanical facilities

Housing Materials Business Other Business

IBIKEN Co., Ltd.
1-60, Gama-cho, Ogaki, Gifu 503-8561, Japan
Tel:0584-74-3355
Manufacture and sale of interior decorative plywood, residential equipment, housing materials, unique component housing etc.

IBIDEN Industries Co., Ltd.
1-197, Uchiwara, Ogaki, Gifu 503-0936, Japan
Tel:0584-89-0777
Sale of petroleum products, mobile communications equipment, sale and maintenance of automobiles, services of logistics

IBIDEN Chemical Co., Ltd.
300, Aoyanagi-cho, Ogaki, Gifu 503-8503, Japan
Tel:0584-89-7491
Manufacture and sale of industrial gases, the related products and chemical goods, as well as environmental business

TAK Co., Ltd.
4-35-12, Kono, Ogaki, Gifu 503-0803, Japan
Tel:0584-75-6501
Software development, network design and construction

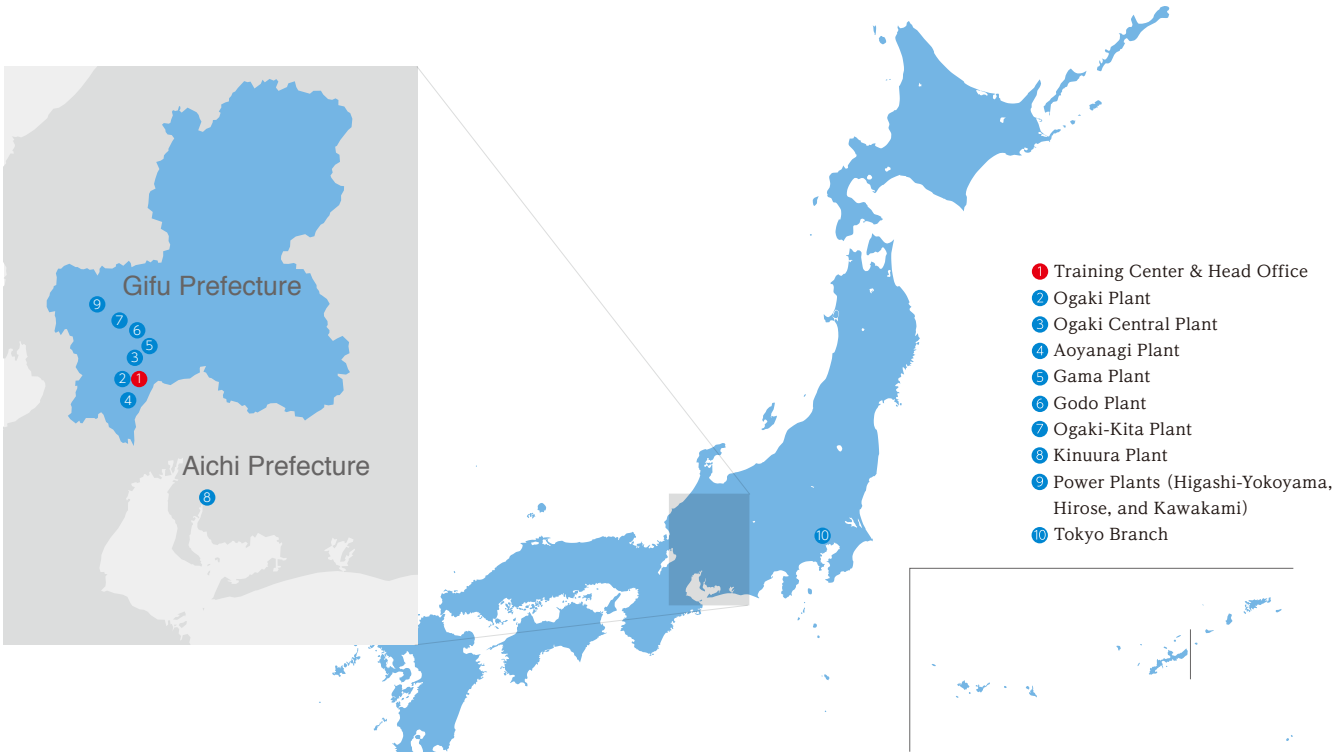
IBIDEN Graphite Co., Ltd.
300, Aoyanagi-cho, Ogaki, Gifu 503-8503, Japan
Tel:0584-89-6425
Machining and sale of graphite specialty

IBIDEN Jushi Co., Ltd.
360, Shirotori, Ikeda-cho, Ibi-gun, Gifu 503-2413, Japan
Tel:0585-45-2405
Manufacture and sale of foamed-resin products

IBIDEN CAREER TECHNO Corp.
300, Aoyanagi-cho, Ogaki, Gifu 503-8503, Japan
Tel:0584-89-7435
Business process outsourcing, business contracting

IBIDEN Bussan Co., Ltd.
339, Arisato, Motosu, Gifu 501-0415, Japan
Tel:058-324-1151
Development, processing and sale of agricultural and marine products

IBIDEN OASIS Co., Ltd.(Special-purpose subsidiary)
100-1, Kasanui-cho, Ogaki, Gifu 503-0027, Japan
Tel:0584-47-5181
Building maintenance



1 Training Center & Head Office



2-1, Kanda-cho, Ogaki, Gifu
503-8604, Japan
Tel: 0584-81-3111
Established: December, 1917

2 Ogaki Plant



905, Kido-cho, Ogaki, Gifu
503-0973, Japan
Tel: 0584-81-3102
Established: December, 1917
Land area: 77,626㎡
Products: IC Package

3 Ogaki Central Plant



100-1, Kasanui-cho, Ogaki, Gifu
503-0027, Japan
Tel: 0584-83-8620
Established: April, 2007
Land area: 113,059㎡
Products: IC Package

4 Aoyanagi Plant



300, Aoyanagi-cho, Ogaki, Gifu
503-8503, Japan
Tel: 0584-89-3312
Established: November, 1943
Land area: 98,777㎡
Products: Printed Wiring Board, Graphite Specialty, Melamine Decorative Laminates

5 Gama Plant



3-200, Gama-cho, Ogaki, Gifu
503-8559, Japan
Tel: 0584-81-4472
Established: August, 1939
Land area: 56,237㎡
Products: IC Package, High Temperature Insulation Wool

6 Godo Plant



1120-1, Suemori, Godo-cho, Anpachi-gun,
Gifu 503-2321, Japan
Tel: 0584-28-1150
Established: October, 2010
Land area: 68,239㎡
Products: Graphite Specialty

7 Ogaki-Kita Plant



1-1, Kitagata, Ibigawa-cho, Ibi-gun, Gifu
501-0695, Japan
Tel: 0585-22-1111
Established: April, 1989
Land area: 104,000㎡
Products: SiC-DPF, Graphite Specialty, Fine Ceramics products

8 Kinuura Plant

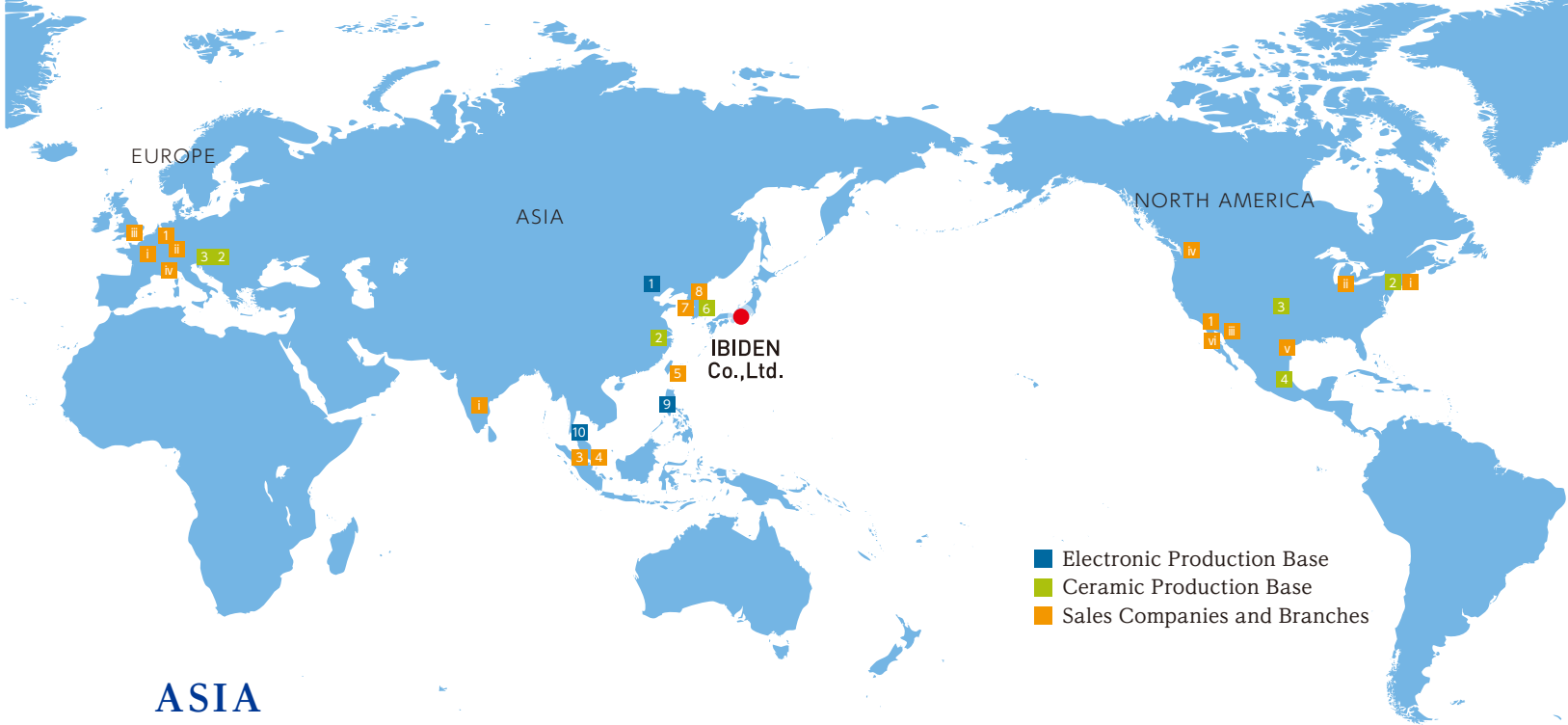


5-1-7, Shinden-cho, Takahama, Aichi
444-1301, Japan
Tel: 0566-53-4111
Established: June, 1969
Land area: 142,214㎡
Products: Substrate Holding Mat, Graphite Specialty, Foamed-resin products

9 Energy Control Unit



Higashi-Yokoyama Power Plant
Electric power supply inception: June, 1921
Power output: 27,900kW
(Higashi-Yokoyama, Hirose, and Kawakami power plants)
(As of March 31, 2018)



ASIA

- 1 IBIDEN Electronics (Beijing) Co., Ltd.
- 2 IBIDEN Electronics (Shanghai) Co., Ltd.
- 3 IBIDEN Asia Holdings Pte., Ltd.
- 4 IBIDEN Singapore Pte., Ltd.
- 5 IBIDEN Taiwan Co., Ltd.
- 6 IBIDEN Graphite Korea Co., Ltd.
- 7 IBIDEN Korea Co., Ltd.
- 8 IBIDEN CERAM Frauenthal Korea Co., Ltd.
- 9 IBIDEN Philippines, Inc.
- 10 IBIDEN Electronics Malaysia Sdn. Bhd.



IBIDEN Electronics (Beijing) Co., Ltd.
(Printed Wiring Board)



IBIDEN Graphite Korea Co., Ltd.
(Graphite Specialty)



IBIDEN Philippines, Inc.
(IC Package)



IBIDEN Electronics Malaysia Sdn. Bhd.
(Printed Wiring Board)

EUROPE

- 1 IBIDEN Europe B.V.
- 1 Amsterdam (Head office)
- 2 IBIDEN Hungary Kft.
- 3 IBIDEN Ceram GmbH
- ii London Branch
- i Paris Branch
- ii Stuttgart Branch
- iv Torino Branch



IBIDEN Hungary Kft.
(SiC-DPF, Substrate Holding Mat)



IBIDEN Porzellanfabrik Frauenthal GmbH
(NOx reduction catalyst)

NORTH AMERICA

- 1 IBIDEN U.S.A. Corp.
- 1 Santa Clara (Head office)
- 2 Micro Mech, Inc.
- 3 IBIDEN CERAM Environmental Inc.
- 4 IBIDEN Mexico, S.A. de C.V.
- iii Phoenix Branch
- iv Portland Branch
- v Austin Branch
- i Boston Branch
- ii Detroit Branch
- vi San Diego Branch



IBIDEN U.S.A. Corp.



IBIDEN Mexico, S.A. de C.V.
(SiC-DPF)

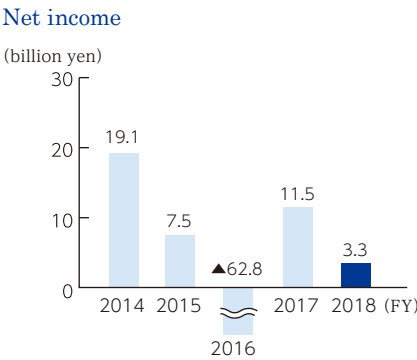
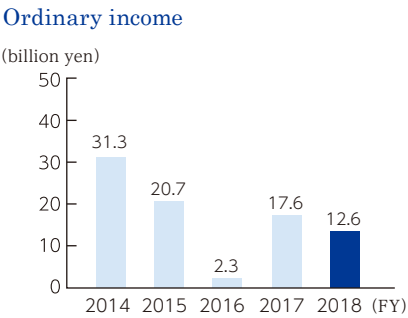
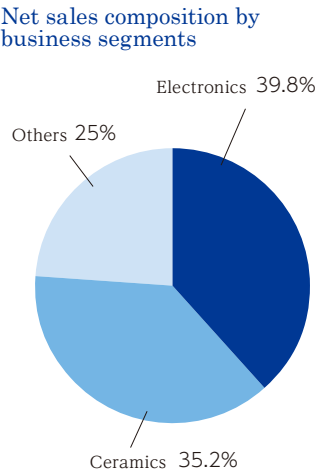
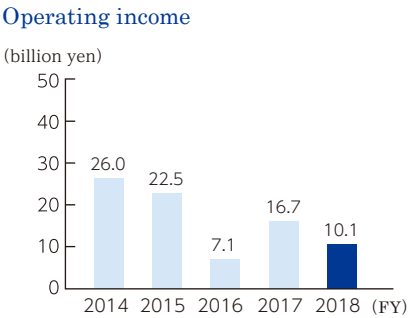
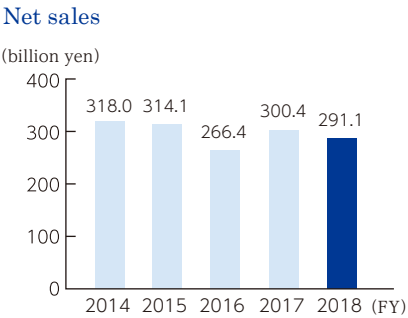
■ Company Outline (As of March 31,2018)

Trade name: IBIDEN Co., Ltd.
Established: November 25, 1912
Capital: ¥64,152 million
Representative: Takeshi Aoki,
President & CEO
Number of employees: 14,718 (Consolidated)
3,525 (Non-consolidated)

Office and Plants
Head office: 2-1, Kanda-cho, Ogaki City, Gifu 503-8604, Japan
Tel: 0584-81-3111
Branch: Tokyo
Plants: Gifu Prefecture (Ogaki, Ogaki Central, Aoyanagi, Gama, Ogaki-Kita, Godo);
Aichi Prefecture (Kinuura)

Products
IC Package, Printed Wiring Board, SiC-DPF, SCR, Substrate Holding Mat, Graphite Specialty, High Temperature Insulation Wool
Number of Subsidiaries
Consolidated subsidiaries: 39 (18 in Japan, 21 in overseas)

■ Change in Business Results



■ Disclosure of Financial Information

Website for shareholders and investors <https://www.ibiden.com/ir/>



IBIDEN takes steps to disclose information at appropriate times to shareholders and investors in a fair, accurate, and easy-to-understand manner. Pursuant to the Timely Disclosure Rule of the Tokyo Stock Exchange, our information disclosure standards require the disclosure of information relevant to our operations, scope of business, and assets that could significantly affect investment judgments, as well as any changes or suspension of important corporate information that has already been published. Our policy is to disclose such information proactively and fairly. We will also disclose corporate information that could significantly influence investment judgments even if the Timely Disclosure Rule does not apply, as accurately, promptly and appropriately as possible.

■ Executives/Organization

■ Directors

Representative Directors
Hiroki Takenaka
Takeshi Aoki
Kozo Kodama
Director
Masahiko Ikuta
Outside Directors
Chiaki Yamaguchi
Toshio Mita
Koichi Yoshihisa

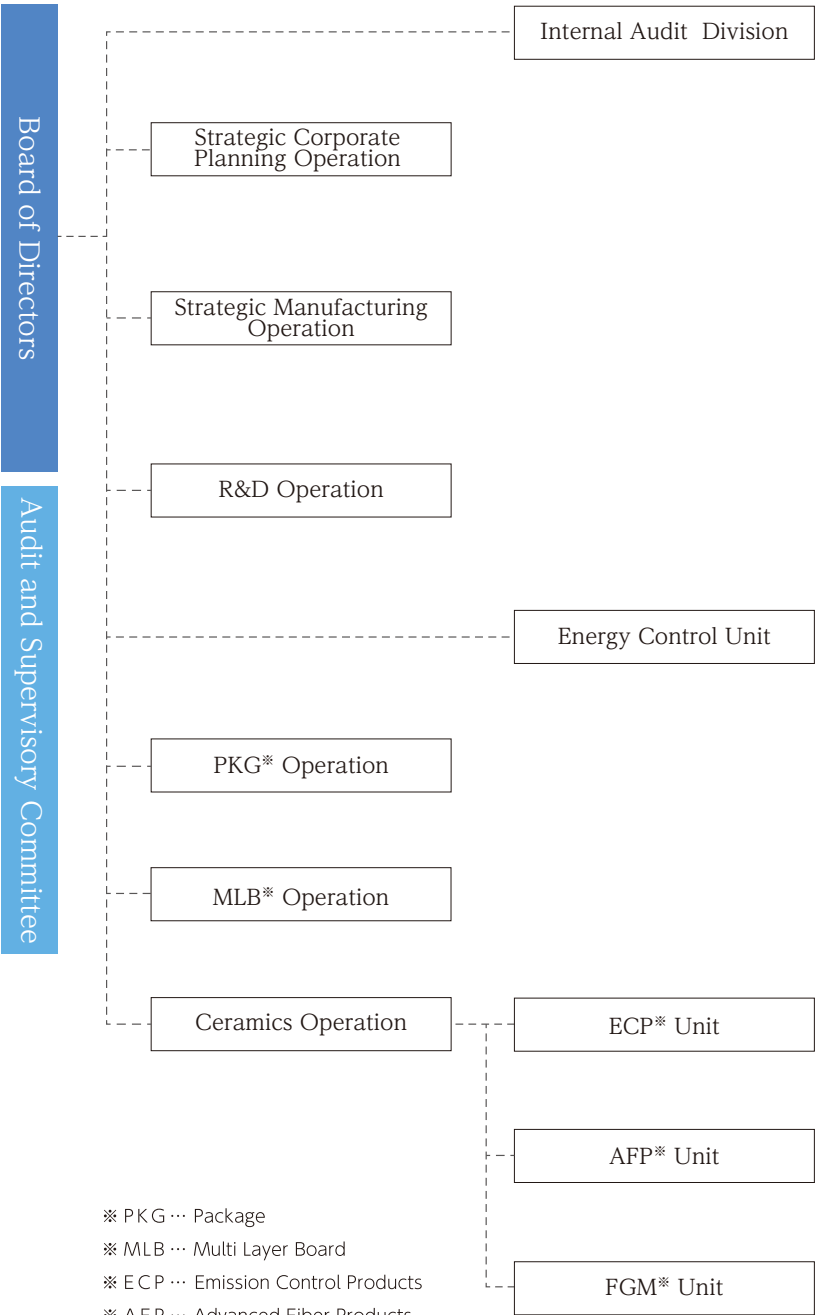
■ Audit & Supervisory Committee Members

Audit & Supervisory Committee Members (Full-time)
Keiichi Sakashita
Yoichi Kuwayama
Audit & Supervisory Committee Members (Outside)
Fumio Kato
Masaki Horie
Nobuko Kawai
Substitute Audit & Supervisory Committee Member (Outside)
Shogo Komori

■ Executive Officers

Chairman of the Board
Hiroki Takenaka
President & CEO
Takeshi Aoki
Executive Vice President
Kozo Kodama
Executive Managing Officer
Masahiko Ikuta
Senior Managing Officers
Sotaro Ito
Koji Kawashima
Shuichi Kubo
Managing Officers
Honchin Endo
Yasuji Hiramatsu
Hisashi Sano
Yasushi Inagaki
Kota Noda
Kazushige Ohno
Keiji Yamada
Yasunori Kawasaki

(As of July 1, 2019)



(As of July 1, 2019)