

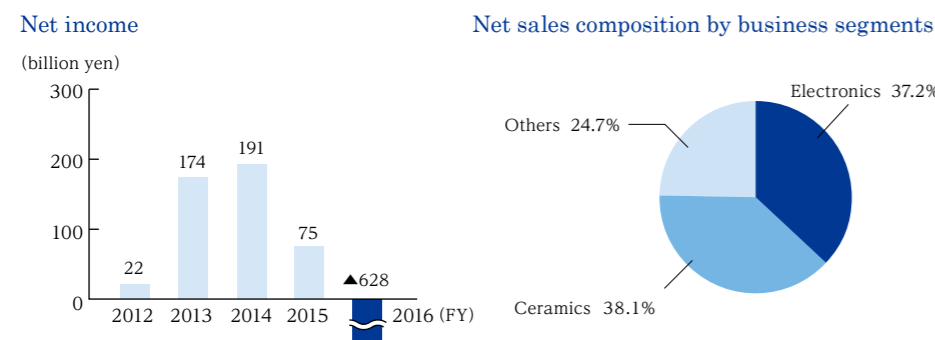
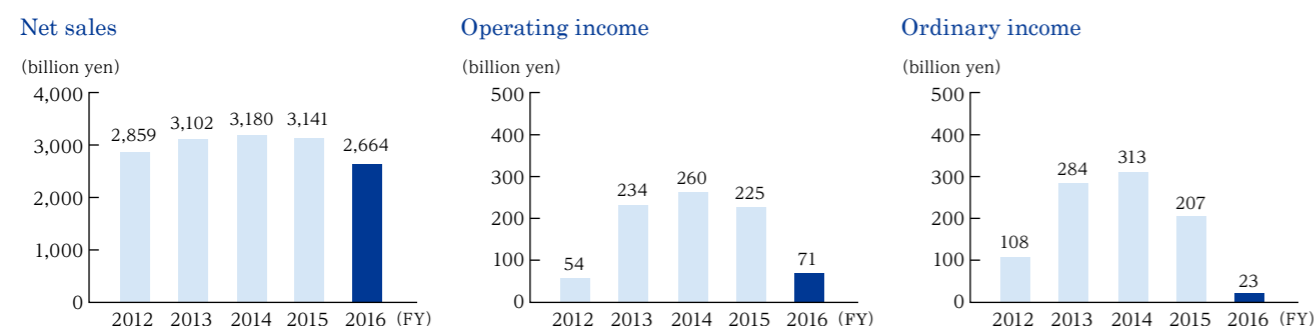
Company Outline

Trade name: IBIDEN Co., Ltd.
Established: November 25, 1912
Capital: ¥64,152 million
Representative: Hiroki Takenaka,
 President & CEO
Number of employees: 13,961 (Consolidated)
 3,544 (Non-consolidated)

Office and Plants
Head office: 2-1, Kanda-cho, Ogaki City, Gifu 503-8604, Japan
 Tel: 0584-81-3111
Branches: Tokyo
Plants: Gifu Prefecture (Ogaki, Ogaki Central, Aoyanagi, Gama, Ogaki-Kita, Godo);
 Aichi Prefecture (Kinuura);

Products
 IC Package, Printed Wiring Board, SiC-DPF, SCR, Substrate Holding Mat, Graphite Specialty, High Temperature Insulation Wool, Fine Ceramics
Number of Subsidiaries
 Consolidated subsidiaries: 33 (14 in Japan, 19 in overseas)

Change in Business Results



Disclosure of Financial Information

Website for shareholders and investors <http://www.ibiden.com/ir/index.html>

IBIDEN takes steps to disclose information at appropriate times to shareholders and investors in a fair, accurate, and easy-to-understand manner. Pursuant to the Timely Disclosure Rule of the Tokyo Stock Exchange, our information disclosure standards require the disclosure of information relevant to our operations, scope of business, and assets that could significantly affect investment judgments, as well as any changes or suspension of important corporate information that has already been published. Our policy is to disclose such information proactively and fairly. We will also disclose corporate information that could significantly influence investment judgments even if the Timely Disclosure Rule does not apply, as accurately, promptly and appropriately as possible.

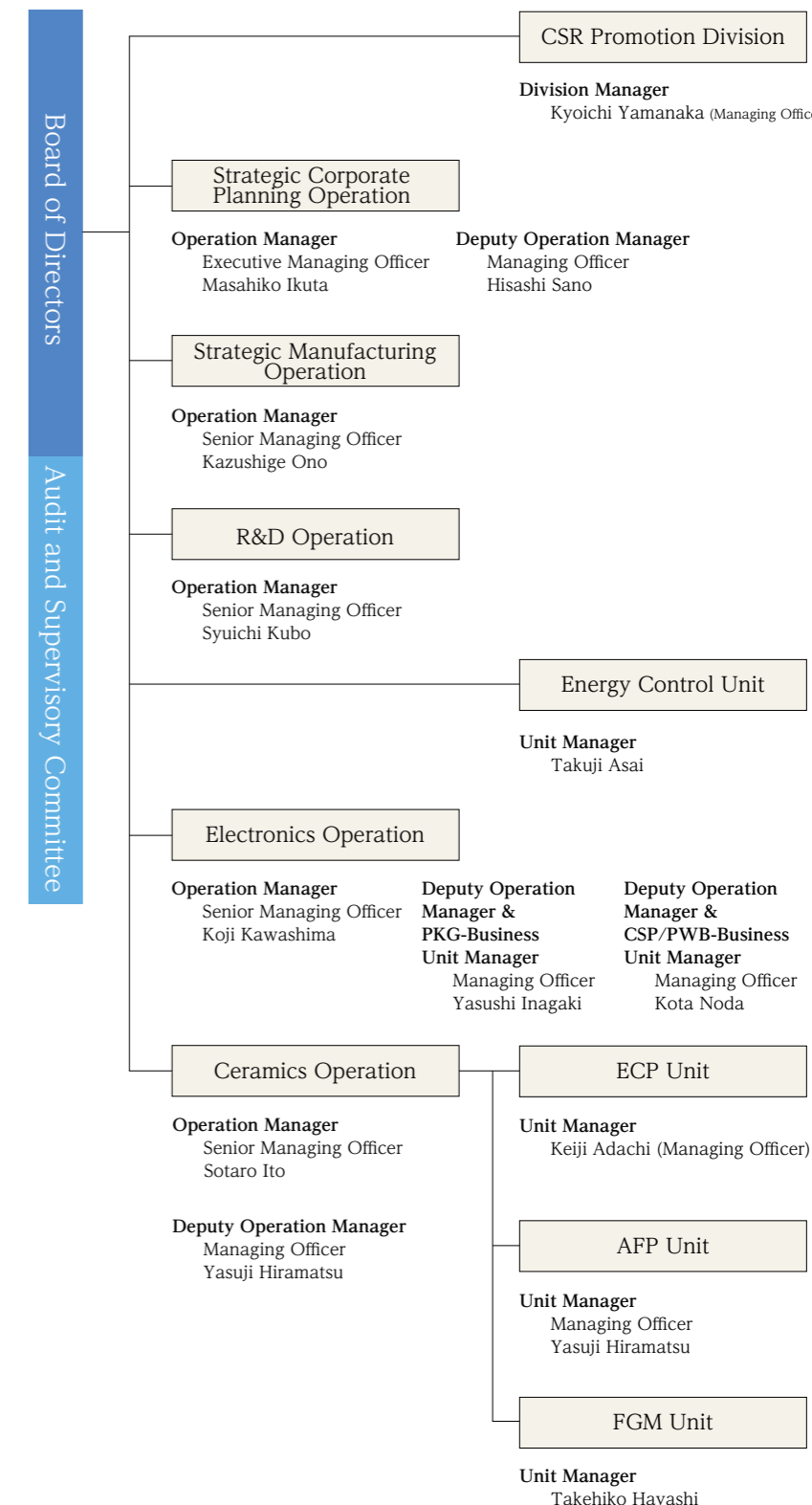


Executives/Organization

- Directors**
- Representative Directors**
 Hiroki Takenaka
 Takeshi Aoki
 Tsuyoshi Nishida
 Kozo Kodama
- Outside Directors**
 Chiaki Yamaguchi
 Toshio Mita
 Koichi Yoshihisa
- Directors, Audit & Supervisory Committee Members**
- Audit & Supervisory Committee Members (Full-time)**
 Keiichi Sakashita
 Yoichi Kuwayama
- Audit & Supervisory Committee Members (Outside)**
 Fumio Kato
 Masaki Horie
 Nobuko Kawai
- Substitute Audit & Supervisory Committee Member (Outside)**
 Shogo Komori

- Executive Officers**
- Chairman of the Board**
 Hiroki Takenaka
- President & CEO**
 Takeshi Aoki
- Executive Vice Presidents**
 Tsuyoshi Nishida
 Kozo Kodama
- Executive Managing Officer**
 Masahiko Ikuta
- Senior Managing Officers**
 Sotaro Ito
 Koji Kawashima
 Kazushige Ohno
 Syuichi Kubo
- Managing Officers**
 Honchin Endo
 Yasuji Hiramatsu
 Hisashi Sano
 Yasushi Inagaki
 Kota Noda

(As of June 16, 2017)



(As of June 16, 2017)